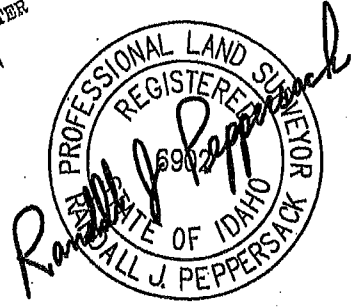
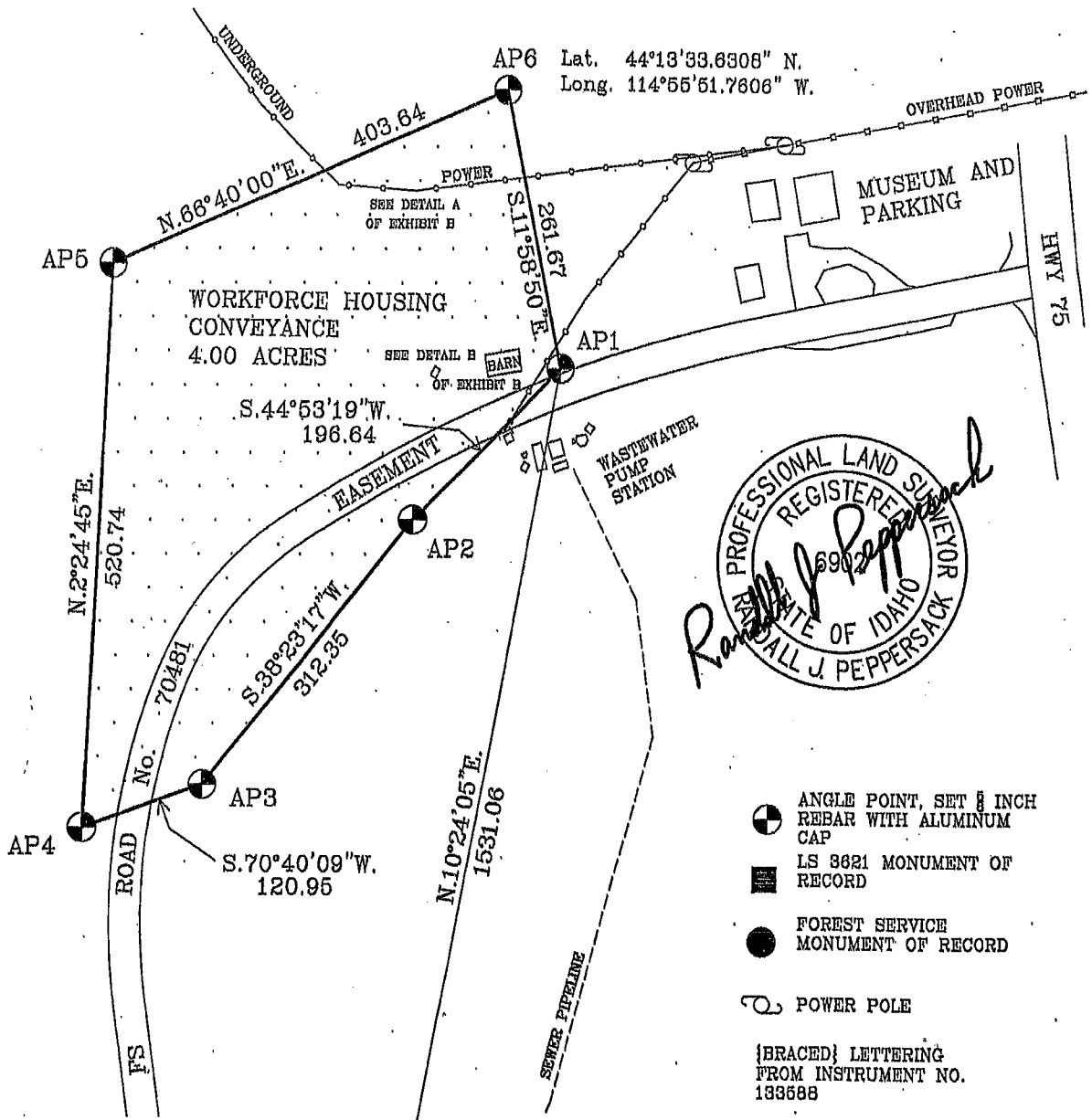


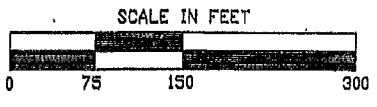
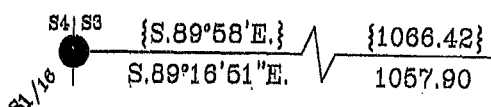
257521

TOWNSHIP 10 NORTH, RANGE 13 EAST, SECTION 3, BOISE MERIDIAN, IDAHO  
SAWTOOTH NATIONAL RECREATION AREA AND JERRY PEAK WILDERNESS ADDITIONS ACT  
PL. 114-46, TITLE II, SECTION 206, 129 STAT 482  
CITY OF STANLEY, IDAHO-WORKFORCE HOUSING



- ANGLE POINT, SET 1/2 INCH REBAR WITH ALUMINUM CAP
  - LS 3621 MONUMENT OF RECORD
  - FOREST SERVICE MONUMENT OF RECORD
  - POWER POLE
- {BRACED} LETTERING FROM INSTRUMENT NO. 133588

Lat. 44°13'18.2266" N.  
Long. 114°56'09.0572" W.



Lat. 44°13'18.2143" N.  
Long. 114°55'54.5952" W.

U.S. DEPARTMENT OF AGRICULTURE FOREST SERVICE	
REGION 4	SAWTOOTH NATIONAL FOREST
EXHIBIT A WORKFORCE HOUSING UNITED STATES TO THE CITY OF STANLEY	
TOWNSHIP 10 NORTH, RANGE 13 EAST, B.M. SECTION 3 CUSTER COUNTY, IDAHO	
APPROVED BY	DRAWN BY
DATE	PAGE 1 OF 1